



The Victorian Society in America
1636 Sansom Street
Philadelphia, PA 19103



The Victorian Society in America 43rd Annual Meeting

Milwaukee, Wisconsin - May 13 - 17, 2009

Milwaukee – “a gathering place by the waters”



The Victorian Society in America 43rd Annual Meeting

Milwaukee, Wisconsin

May 13 - 17, 2009

Milwaukee –

“a gathering place by the waters”

Milwaukee – a gathering place by the waters...

Milwaukee is the largest city in Wisconsin and the 23rd largest in population (ca. 600,000) in the United States. It is the county seat of Milwaukee County and is beautifully situated on the south-western shore of Lake Michigan.

Long before the first settlers came to this area, the Algonkian Indians had a special name for the land: *Millioki*, which means “gathering place by the waters.”

The first Europeans to pass through the area were French missionaries and fur traders. In 1818, the French-Canadian explorer Solomon Juneau settled in the area, and in 1846 Juneau’s town combined with two neighboring towns to incorporate as the City of Milwaukee. Large numbers of German, Eastern European and other immigrants helped increase the city’s population during the 1840s and the following decades.

Once known almost exclusively as a brewing and manufacturing powerhouse, Milwaukee has taken steps in recent years to reshape its image. In the past decade, major new additions to the city have

included the Milwaukee Riverwalk, the Midwest Airlines Center, Miller Park (home of the Milwaukee Brewers baseball team), and a spectacular new expansion to the Milwaukee Art Museum by internationally renowned architect Santiago Calatrava. In addition, many new skyscrapers, condos, lofts and apartments have been constructed in neighborhoods on and near the lakefront and riverbanks, and many older buildings have been rehabbed or repurposed.

...the Algonkian Indians had a special name for the land: Millioki, which means “gathering place by the waters.”

In all, a surprising amount of the 19th and early 20th century fabric of the city remains which we shall explore during the course of our visit. So please join us. We can guarantee you won’t be disappointed.

Our host hotel will be the historic **Pfister Hotel**, a Victorian masterpiece built in 1893 and designated one of the National Trust’s Historic Hotels of America. There we will enjoy beautifully appointed rooms and lavishly restored public spaces in the heart of downtown Milwaukee. There is also a world-class spa on the premises.

PRE-CONFERENCE TOUR

Wednesday, May 13, 2009

Breakfast on your own

Lunch included

We depart from the Pfister Hotel by motor coach and head south to Racine, Wisconsin, headquarters of SC Johnson, a family-owned company which has been manufacturing products for the home for more than 120 years.

The first stop is at **Wingspread**, a 14,000 square-foot home nestled amid 36 acres on Wind Point, a peninsula on the western shore of Lake Michigan, north of Racine. Designed by Frank Lloyd Wright in 1938 as the private residence of Herbert F. Johnson, Jr., Wingspread was donated in 1959 to The Johnson Foundation to be used as an international educational conference facility, when Johnson and his wife moved to an adjacent residence.

After touring the residence, we continue on to the **SC Johnson Administration Building**, also designed by Wright. Since its opening on April 22, 1939 as the Johnson Wax Building, it has been a mecca for tourists, architects and Frank Lloyd Wright devotees from around the world. Today the building remains in use as the international headquarters for SC Johnson.

Lunch will be at **Sebastian’s**, a fine dining establishment that is normally only open for dinner, but will open just for us.

We conclude our day with a tour of the **Conrad Schmitt Studios**, one of the largest decorative painting and stained glass studios in the nation, providing award-winning work for churches, theatres, hotels, courthouses and state capitols throughout the country.

We will return to the Pfister Hotel by 5:00 PM, in time to freshen up before the opening reception.

Opening Reception

Wednesday evening, May 13 – The Pabst Mansion

Hearty hors d’oeuvres, Cash bar

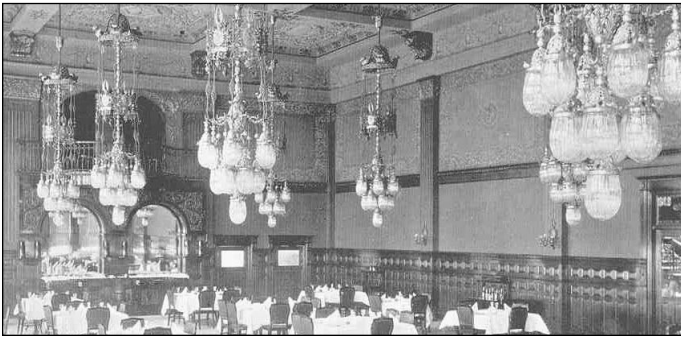
In 1892, the Flemish Renaissance Revival Mansion of Captain Frederick Pabst, world famous beer baron, accomplished sea captain, real estate developer, philanthropist and patron of the arts was completed. From the day the house was inhabited it was considered the jewel of Milwaukee’s famous avenue of mansions called Grand Avenue and represented the epitome of America’s Gilded Age Splendor in Milwaukee.

Join us this evening for a reception as we tour the elegant Victorian mansion, welcomed by its Director of Development, **John Eastberg**, who will speak on his favorite subject: “**Lost & Found: Victorian Milwaukee.**”

Note: Buses will shuttle us between the hotel and the Pabst mansion.

Thursday, May 14, 2009

Breakfast on your own
Lunch included
Chapters Reception (optional)
Dinner on your own



This morning we break into small groups for a **walking tour of downtown Milwaukee** along the Milwaukee Riverfront to the Historic Third Ward led by guides from **Historic Milwaukee**. We will see a remarkable number of beautiful Victorian-era buildings, starting with the hotel in which we are staying, the **Pfister Hotel** (1893), whose extraordinary architecture and welcoming ambiance is marked by a priceless Victorian art collection which rivals that of any hotel in the world. We will see the **Federal Building** (1899) by architect Willoughby J. Edbrooke – an outstanding example Richardsonian Romanesque architecture; the **Cathedral of St. John the Evangelist**; **City Hall** (1895) by architect Henry Koch in the German Renaissance Revival style; the **Pabst Theatre** (1895); the **Mackey Building** (1874), built to accommodate the Grain Exchange (a commodity trading room) and the offices of the Chamber of Commerce; the **Loyalty Building** (1886) built as the third corporate headquarters of the Northwestern Mutual Life Insurance Company and now considered one of Milwaukee's premier examples of the Richardsonian Romanesque style; and the **Mitchell Building** (1878), Milwaukee's finest example of a high style, French Second Empire commercial building, designed by eminent Milwaukee architect Edward Townsend Mix for entrepreneur and businessman, Alexander Mitchell.

After time for lunch we will rejoin our guides for a walking tour in the Third Ward.

The Third Ward is a turn-of-the-century warehouse and manufacturing district – now revived with “Soho”-type art galleries, boutiques, eateries, and condos. Soon after a great fire in 1892, prominent local architects stepped in to design many of the “new” commercial structures. Construction continued over the next 36 years and because of this relatively short span of development, the buildings exhibit an interesting continuity that unifies the neighborhood.

After our walking tour we will board the historic double-decker **Iroquois** for a **boat ride and narrated tour** of the Milwaukee River, Harbor and Lake Michigan.

There will be a Chapters Reception at the hotel for chapter representatives and chapter members in the late afternoon after we return from our tour of the Third Ward (time and venue TBA).

Friday, May 15, 2009

Breakfast on your own
Lunch included
Annual business meeting
Dinner on your own
Alumni Dinner (optional)
Silent Auction Opens

Depart by motor coach this morning for a **tour of buildings on the South Side** of Milwaukee.

We begin with a tour of the remarkable **Basilica of St. Josaphat**, a Franciscan center for prayer and spirituality. In 1896 Father Wilhelm Grutza, Pastor, commissioned architect Erhard Brielmaier to design a new church, patterned after St. Peter's in Rome and having all the elements of a classical Romanesque basilica. Saint Josaphat was designated a Minor Basilica by Pope Pius XI in 1929 (the third church so honored in the USA).

Next, we tour a unique collection of six houses on one block, designed in 1916 by **Frank Lloyd Wright**. The four duplex (upper and lower flats) houses and two single-family bungalows were part of Wright's **American System-Built Homes**, a system that involved cutting the lumber and other materials in a mill or factory, then bringing them to the site for assembly. Over a career spanning seven decades, Frank Lloyd Wright took special interest in creating architect-designed homes for moderate- and low-income families. The houses on Burnham Street were built on speculation by developer Arthur L. Richards and eventually sold to individual buyers.

Also in that neighborhood we visit the **School Sisters of St. Francis Convent**, home to more than 50 sisters, the International Offices of the congregation and the offices of the United States Province. The first motherhouse, St. Joseph Convent, was dedicated in January, 1887. Following a devastating fire, the rebuilt convent, dedicated on May 2, 1891, is the present Motherhouse and in the following decades additions to the new building included the magnificent **St. Joseph Convent Chapel**. Dedicated in 1917, the excellent acoustics and exquisite beauty of the chapel provide a breathtaking and prayerful environment in which to experience and savor music.

Our **annual business meeting** takes place during lunch at the **Envoy Restaurant**, a charming Art Deco-style restaurant with nostalgic ambience, in the recently renovated 1920s Hotel Ambassador.

In the early afternoon we visit the **Charles Allis Museum**. Designed by the prominent Milwaukee architect Alexander Schweiler as a house museum, this 1911 Tudor style mansion holds Charles and Sarah Allis' collection featuring 19th Century French and American Paintings. The collection spans 2000 years and includes original and antique furnishings.

Later in the afternoon, we break into three groups and visit **three churches**, all outstanding architectural gems on Milwaukee's near east side:

Cathedral Church of All Saints (Episcopal), a Gothic Revival church building designed by Edward Townsend Mix, a noted Milwaukee architect, and constructed in 1868. In the 1980s, the blackened exterior of the cathedral

buildings received a thorough cleaning, revealing the original “Cream City” brick coloring, a distinctive Milwaukee feature.

St. Paul’s Episcopal Church, designed by architect Edward Townsend Mix in Romanesque style and built in 1884 using Lake Superior Sandstone, a dark red sandstone found near the Apostle Islands in Lake Superior. It features wrought iron by Master Blacksmith Cyril Colnik. St. Paul’s Church also has the largest collection of Tiffany stained glass windows in the state.

First Unitarian Society of Milwaukee, an English Gothic church that was designed by architects Ferry & Clas and erected in 1892.

We will return to the hotel by 5:00 PM for dinner and an evening on your own.

Attention Summer School Alumni: The Alumni Association annual meeting and dinner will take place this evening. Details are found elsewhere in this brochure.

Saturday, May 16, 2009

Breakfast on your own

Lunch on your own

Closing Banquet included

Awards Presentation

Silent Auction concludes

We depart this morning on foot and walk eastward along Wisconsin Avenue to the **Milwaukee Art Museum**, noticing the prominent sculpture in front of us as we approach Lake Michigan. Even before it was installed 27 years ago at the east end of Wisconsin Avenue, people were arguing about “**The Calling**” - Mark di Suvero’s bold orange sunburst made of steel I-beams. The debate heated up once again in 2001 after Santiago Calatrava’s poetic white addition to the Milwaukee Art Museum spread its wings just behind the sculpture.

We arrive just in time for the mesmerizing opening of the **Brise Soleil** (sunscreen) atop the **Calatrava building**. Then we go inside for a tour of this beautiful building and its wonderful art collection. With a history dating back to 1888, the Milwaukee Art Museum’s far-reaching Collection includes nearly 20,000 works from antiquity to the present. The Museum’s permanent holdings include important collections of Old Masters and 19th- and 20th-century art. The Museum’s collections of American decorative arts, German Expressionism, folk and Haitian art, and American art after 1960 are among the country’s finest.

After the guided tour there will be time to browse and have lunch on your own in the museum’s café.

We will board our coach this afternoon for a short drive north along the lakefront to **Villa Terrace**. This Italian Renaissance-style villa, designed and built by architect David Adler in 1923, was originally the residence of Lloyd Smith of the A.O. Smith Corporation and his family.

Villa Terrace features fine and decorative arts dating from the 15th to the 18th centuries, wrought-iron masterpieces by Cyril Colnik, and a formal Italian Garden.

Just two blocks to the north we will visit the **Frederick C. Bogk Residence**, designed by Frank Lloyd Wright in 1916 for Milwaukee businessman Frederick C. Bogk during the period when Wright was also working on the Imperial Hotel in Japan. It is one of the few remaining examples of Wright’s work from this period.

This house has some of the characteristic features of the Prairie style—horizontality, a low-pitched roof with wide eaves, and rows of leaded-glass windows. Like many of Wright’s houses, this residence does not have an entrance in the front facade; the main entrance is from the driveway on the north side.

We will conclude the day’s touring with a very special visit to a **private Victorian home** and will return to the Pfister Hotel by 5:00 PM to freshen up for our closing banquet at **Café Rouge in the hotel**, where we will present our preservation and book awards. The evening will end with some competitive bidding before the annual silent auction comes to a close.

ALUMNI ASSOCIATION DINNER

The **Alumni Association** of the Victorian Society Summer Schools 2009 **Annual Meeting and Dinner** will be hosted by Summer School Alumni Chris Szczesny-Adams and her husband Christopher Adams at their Queen Anne home – the Frederich R. Buell Residence – on **Friday, May 15 from 6:00 PM to 9:00 PM**. *Bus transportation will be provided from and back to the Pfister Hotel.*

Only active Alumni are eligible to attend the Alumni Association Annual Meeting and Dinner.

The \$50 fee is payable by check or cash at the event. Proceeds will benefit the Summer Schools Scholarship Fund.

ADVANCE RESERVATIONS ARE REQUIRED. RSVP to Nancy Golden at goldendirect@aol.com or at 805 563-2315.

The Szczesny-Adams address is 2726 E. Kenwood Boulevard, Milwaukee

About the home: The Frederich R. Buell Residence (1899) was designed by architect Elmer Grey. The house is Queen Anne in style with unique features that reflect Grey’s personal interest in developing an inventive and indigenous American architecture. Expanding on the Queen Anne style, Grey’s transitional design reflected his interest in the Arts and Crafts movement with beamed ceilings, expansive windows, integrated spaces, and a practical living arrangement.

POST-CONFERENCE TOUR

Sunday, May 17, 2009

Breakfast on your own

Lunch included

We will check out and board our coach (with our luggage) at 9:00 AM

In the morning, we drive about an hour southwest of Milwaukee to **Ten Chimneys**, the estate lovingly created by theatre legends Alfred Lunt and Lynn Fontanne. Ten Chimneys is a landmark unique among our national treasures. Its diverse collections and enchanting décor are comprised of the original pieces hand-picked by the Lunts in the 1920s, '30s, and '40s. It is open to the public as a world-class house museum and national resource for theatre, arts, and arts education.

In 1914, Alfred Lunt came into an inheritance from his father and purchased undeveloped land in Genesee Depot, where he and his family often picnicked. He then personally designed the first portion of Ten Chimneys' Main House as a home for his mother and sisters. In 1922-23, after the Lunts were married, the house was extensively remodeled and the chicken coop was converted into a cottage for Lynn and Alfred to live in when they weren't performing. Most of the renovations and additions to Ten Chimneys took place during the 1930s.

We will enjoy a catered **box lunch** in the Café on the grounds at Ten Chimneys.

In the afternoon we journey back to the past with a visit to **Old**

World Wisconsin ... a vivid re-creation of the working farmsteads and settlements established by European immigrants in the late 19th century in America's heartland. It comprises an 1870s cross-roads village and 10 ethnic farmsteads located on 576 acres of wooded hills in the Southern Unit of Kettle Moraine State Forest.

We will get you back to Milwaukee's General Mitchell International Airport by 5:00 PM, so please do not book your return flights for departure before 6:00 PM. There will also be a final stop at the Pfister Hotel for those who are staying on an extra night in Milwaukee.

SILENT AUCTION

The Silent Auction will be set up in a secure room in the Pfister Hotel. Members will have the opportunity to review and place bids on Friday and Saturday, May 15 and 16; final bids can be placed during the Saturday evening awards banquet. Please be generous and donate antiques, collectibles, paintings, jewelry, etc. to this important fundraiser. All donations are tax-deductible. Please bring your donations with you or ship them (no EARLIER than May 6) to yourself as follows: The Pfister Hotel, Attn: Terri Deutscher, 424 East Wisconsin Avenue, Milwaukee, WI 53202. Be sure to mark Victorian Society Silent Auction clearly on the outside of the package.

REGISTRATION INFORMATION

Pre-Conference Tour: Wednesday, May 13, 2009

Annual Meeting Package: Wednesday, May 13, 2008 through Saturday, May 16, 2009

Post-Conference Tour: Sunday, May 17, 2009

WE STRONGLY RECOMMEND THAT ALL MEMBERS WHO PLAN TO ATTEND REGISTER WITH THE SOCIETY AND BOOK THEIR HOTEL BY MARCH 15, 2009.

The Pre-Conference Tour includes visits, transportation and lunch. Due to limited seating, this portion of our event will fill up quickly. Please reserve early to avoid disappointment. Hotel accommodations are NOT included in the Pre-Tour.

The Annual Meeting Package includes site admission fees; transportation; Wednesday reception; Thursday lunch; Friday lunch; Saturday dinner. Hotel accommodations are NOT included in the Annual Meeting Package.

The Post-Conference Tour includes visits; transportation and lunch. Due to limited seating, this portion of our event will fill up quickly. Please reserve early to avoid disappointment. Hotel accommodations are NOT included in the Post-Tour.

Special Note Bear in mind that there will be a lot of walking so please bring comfortable shoes.

Getting There

Milwaukee is served by the General Mitchell International Airport in Milwaukee (airport code: MKE). The following airlines provide service: Air Canada, AirTran Airways, American, Comair (the Delta Connection), Continental Express, Delta, Frontier, Midwest Airlines, Midwest Connect, Northwest, United Express and US Airways Express.

If you need assistance making your travel arrangements to Milwaukee you may call Fran at Custom Travel at (888) 810-7240.

May weather in Milwaukee should be Spring like, with the average temperature between 60 and 65 degrees Fahrenheit, but it can vary, so it would smart to check the local forecast before departure so you can dress accordingly.

Hotel Information

Our headquarters hotel is the Pfister Hotel, 424 East Wisconsin Avenue, Milwaukee, WI 53202. A member of the National Trust Historic Hotels of America, the hotel has been considered the premier hotel in Milwaukee since it opened in 1893. The main phone number for reservations is 800-472-4403. Please use this number to make your room reservation and be sure to mention that you are with the Victorian Society in America to get the discounted rate. We have reserved a block of rooms at a discounted rate of \$185.00 per night single or double occupancy, and these rooms will be held for us exclusively until April 13, 2009. After this date, the discounted rate will no longer be available and the rooms will be subject to availability.

MAKING RESERVATIONS AND ARRANGEMENTS WITH THE HOTEL ARE YOUR RESPONSIBILITY AND AT YOUR EXPENSE. THE SOCIETY'S ONLY ROLE IS TO SECURE THE DISCOUNTED GROUP RATE.

Eating Out in Milwaukee

There are numerous restaurants – of various types, cuisines and price points – within walking distance of the hotel, including coffee shops where simple breakfasts can be purchased.

How to Register

Registration can be made via check (preferable), credit card or money order. Checks should be made payable to The Victorian Society in America. The Victorian Society in America is not responsible for accidents, injury or loss of personal items during this program. The Victorian Society in America reserves the right to make such changes to the schedule, sites to be visited, or personnel as may become necessary or desirable. Reservations are made on a first come, first served basis. As this mailing has been sent via first class mail reservations will be taken immediately. RESERVE EARLY AS SPACE IS LIMITED. Phone or fax reservations will ONLY be taken with a credit card payment at the time of reservation. Send your fax reservations to 215-636-9873.

Refunds

Refunds will only be given until April 13, 2009. A \$100.00 administrative fee will be deducted for each refund. After April 13, 2009 no refunds of any kind will be given.

If you think that there is a chance that you will need to withdraw from this trip after you have paid you may wish to consider buying trip insurance. Trip insurance protects you against any unforeseen need to cancel a trip. Trip insurance can cover the VSA fee and your airfare and hotel costs. There are many providers of this kind of insurance: one place to start looking is www.insuremytrip.com, 800-487-4722. The VSA is providing this information purely as a service to you: we do not receive any compensation from any insurance organization.

	COST	No. of people	TOTAL
REGISTRATION FEE:			
Through March 1, 2009	\$50	()	= \$ _____
After March 1, 2009 (\$50 registration fee plus \$25 late fee)	\$75	()	= \$ _____
PRE-CONFERENCE TOUR	\$100	()	= \$ _____
ANNUAL MEETING PACKAGE (not including pre- or post-tour)	\$540	()	= \$ _____
POST-CONFERENCE TOUR	\$125	()	= \$ _____
Membership in the Victorian Society in America <i>(if not already a member)</i>	Individual: \$55 Household: \$65	() ()	= \$ _____ = \$ _____
Non-members wishing to attend the Annual Meeting must join the Victorian Society in America			
TOTAL REGISTRATION AMOUNT			\$ _____

Enclosed is my check for \$ _____ made payable to the Victorian Society in America.

Please charge my MasterCard VISA Discover
 # _____ Expires _____
 Signature _____
 Name: _____
 Additional Participant: _____
 Address: _____
 City: _____ State _____ Zip _____
 Phone: (day) _____
 Phone: (evening) _____
 Fax: _____
 E-mail address: _____

Please mail the completed form with your payment to:
 The Victorian Society in America
 1636 Sansom Street
 Philadelphia, PA 19103

**Please note that we do NOT take
 AMERICAN EXPRESS.**

RESERVATIONS